



Let **UK** Home

1 Bedrooms

Flat

Located in London

£2,000 Per Month



info@letukhome.co.uk

<https://www.letukhome.co.uk/>

01795 358 886



3 Caversham Road London

NW9 4DU



Let UK Home are excited to offer this spectacular one bedroom apartment in the heart of Cornelia House part of the Beaufort Park.

The flat comprises a spacious open kitchen with a stylishly attached dining area, a magnificent living room leading to a private balcony, one bright bedroom with a built-in wardrobe and one modern bathroom. A virtual viewing is provided.

The apartment has a variety of complete facilities, such as concierge reception, gym, swimming pool, sauna, etc., as well as a series of convenient shops, bars and restaurants.

Close to fashionable landmarks Hendon, Mi Hi, Golders Green and Hampstead Heath; also close to multiple shopping places including Brent Cross Shopping Center, O2 Center and the fashionable Westfield Shopping Center,

The apartment is within walking distance of Colindale subway station, Middlesex University, and can be quickly reached by car to Central Saint Martins, University College London, The London School of Economics and Political Science, King's College London.

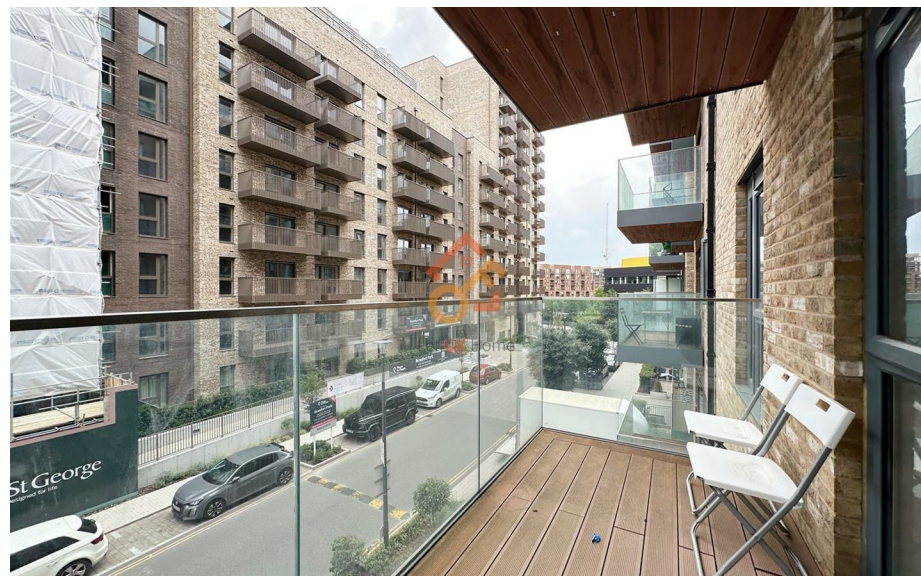
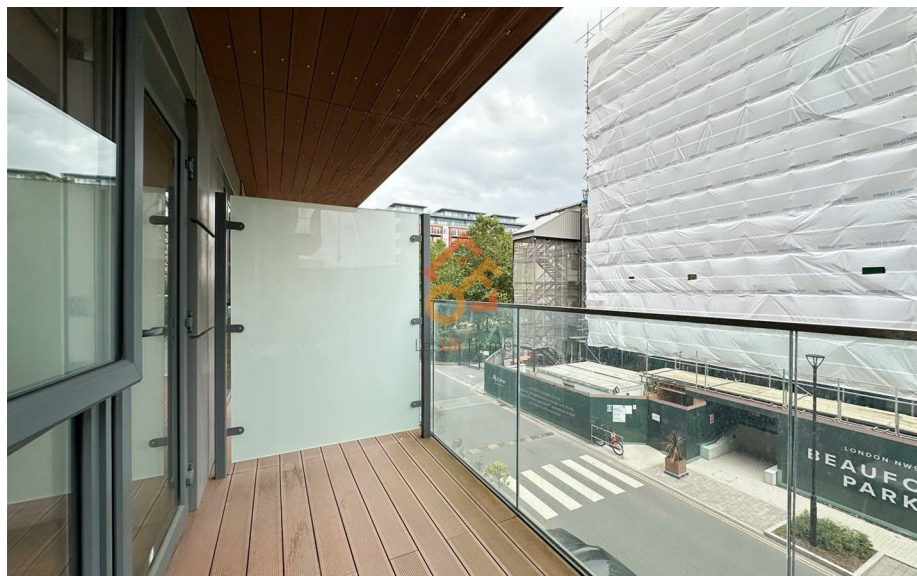
3 Caversham Road London

£2,000 Per Month



- 2nd Floor
- 24h Security
- The Spa
- Sauna & Steam Room
- EPC Rating: B

- Concierge Service
- The Gym
- Swimming Pool
- Virtual Viewing Available



1 Bedroom Apartment	51.3 sq m	553 sq ft
Living Space	8.21m x 3.25m	27' 0" x 10' 8"
Bedroom	3.64m x 2.91m	12' 0" x 9' 6"
Balcony	4.7 sq m	50.6 sq ft



Let **UK** Home

3F 2 Eastbourne Terrace
Paddington
London
W2 6LG

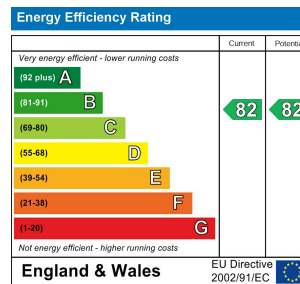
01795 358 886

info@letukhome.co.uk

Council Tax Band: C

Local Authority:

Agents Note: Whilst every care has been taken to prepare these particulars, they are for guidance purposes only. All measurements are approximate and are for general guidance purposes only and whilst every care has been taken to ensure their accuracy, they should not be relied upon and potential buyers/tenants are advised to recheck the measurements.



<https://www.letukhome.co.uk/>